

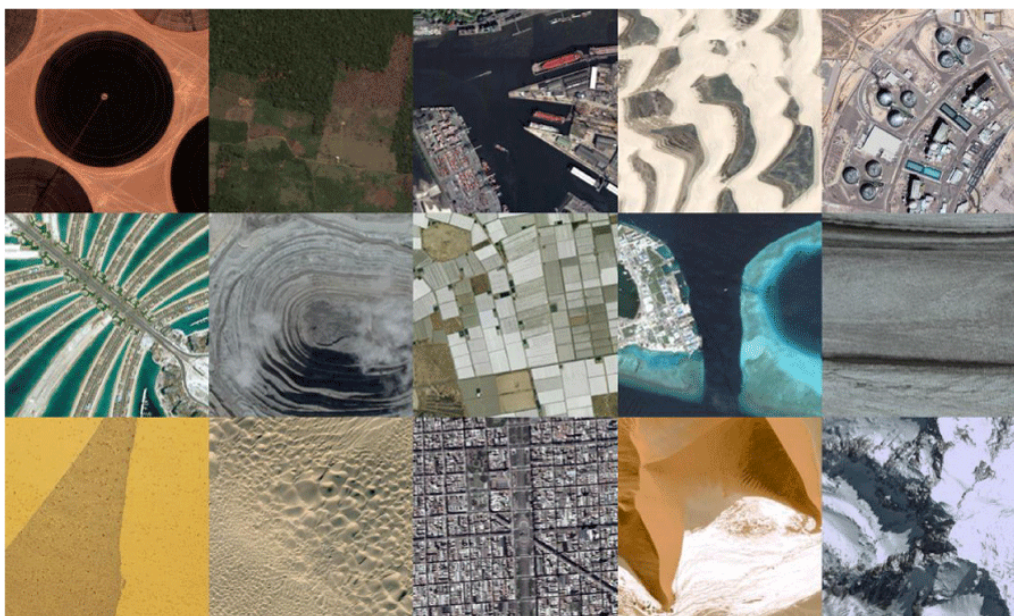


THE REMOTE SENSING LAB

Director: [Dr. Noam Levin](#)

Remote sensing is the science and art of obtaining information about an object, area, or phenomenon through the analysis of data acquired by a device that is not in contact with the object, area, or phenomenon under investigation

(Lillesand and Kiefer, 2000).



*Figure 1: Snapshots of the Earth from space, presenting various natural and anthropogenic features
all images shown at the same scale*

The Remote Sensing lab at the Department of Geography focuses on several research themes, including: dune dynamics, land cover/land use changes, human impacts on natural environments.

The lab facilities include remote sensing software (ATCOR, ENVI, ERDAS, IDRISI, PC-MODWIN). To conduct basic remote sensing studies and field calibration/validation, the lab has a portable field/lab spectroradiometer, the SVC HR-1024, manufactured by Spectra Vista Corporation. This new spectroradiometer has 1024 channels between 350-2500 nm with a rugged PDA/Bluetooth for wireless operation (Figures 2, 3). It can acquire spectral measurements in several modes, including a fiber optic light guide 25 degree FOV, a 4 degree FOV lens, or direct contact measurements using a specially designed leaf/fruit probe. In addition the lab has a Fuji-1S digital camera that is sensitive to the near-infrared region, thus enabling us to acquire images in the VIS-NIR (Figure 4).



Figure 2: The SVC HR-1024 spectroradiometer

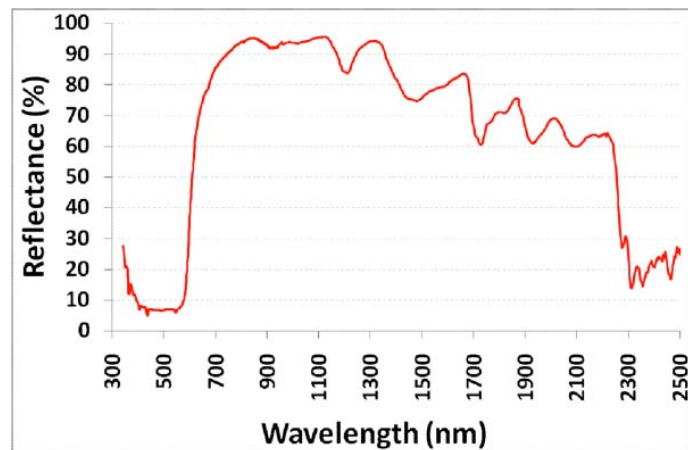


Figure 3: Spectral reflectance of red plastic as measured with the SVC HR-1024

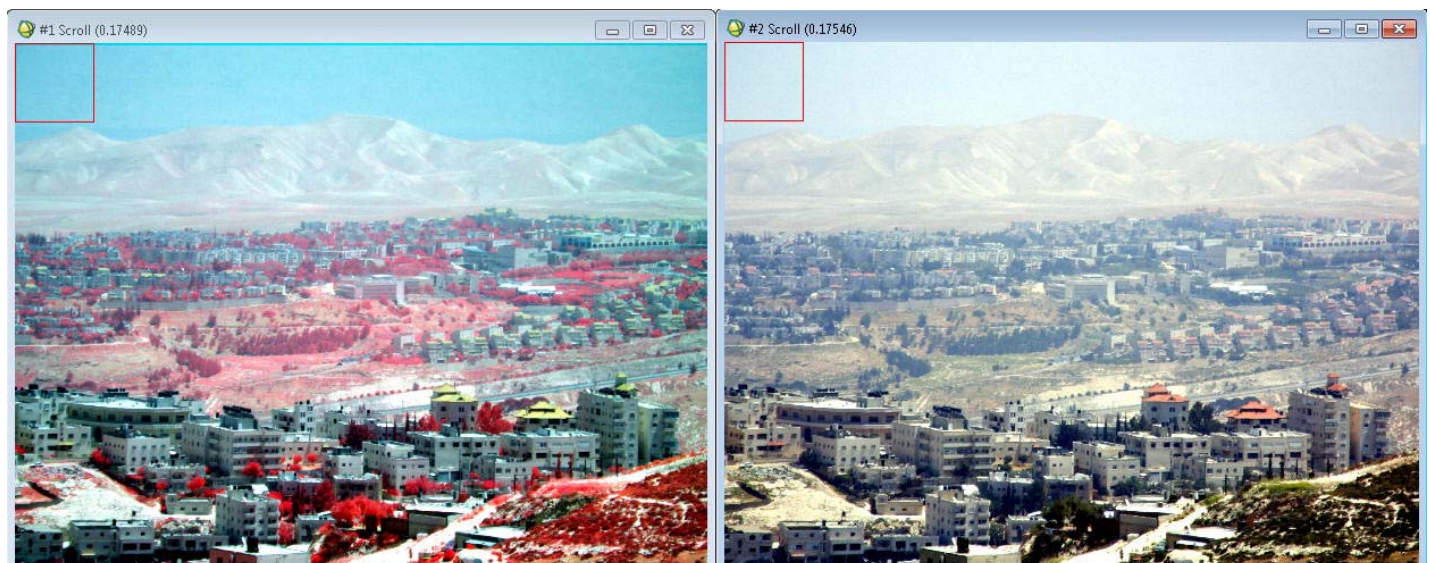


Figure 4: A view from Mount Scopus eastwards using the Fuji 1S camera, April 2012
(left: infrared false color composite; right: true color composite)

Lab members:

[Dr. Noam Levin](#) - Head of RS lab

noamlevin@mscc.huji.ac.il

Gad Sheffer - PhD student

2010 - ongoing gads81@gmail.com

Pierre-Elie Jablon - MA student

2011 - ongoing pierre-e.jablon@mail.huji.ac.il

Tal Katz - MA student

2011 - ongoing tal.cuthalion@gmail.com

Hila Efrati - MA student

2011 - ongoing hilaefrati@yahoo.com

Shalem Cohen - MSc student

2009 - 2012 shalem.cohen@mail.huji.ac.il

Yishai Duke - MA student

2008 - 2011 yishaid@gmail.com